

Average retail price of electricity

<https://www.eia.gov/electricity/data/browser/#/topic/7?agg=1,0&geo=00fo&endsec=8&linechart=ELEC.PRICE.CT-RES.M~ELEC.PRICE.ME-RES.M~ELEC.PRICE.MA-RES.M~ELEC.PRICE.NH-RES.M~ELEC.PRICE.RI-RES.M~ELEC.PRICE.VT-RES.M&columnr>

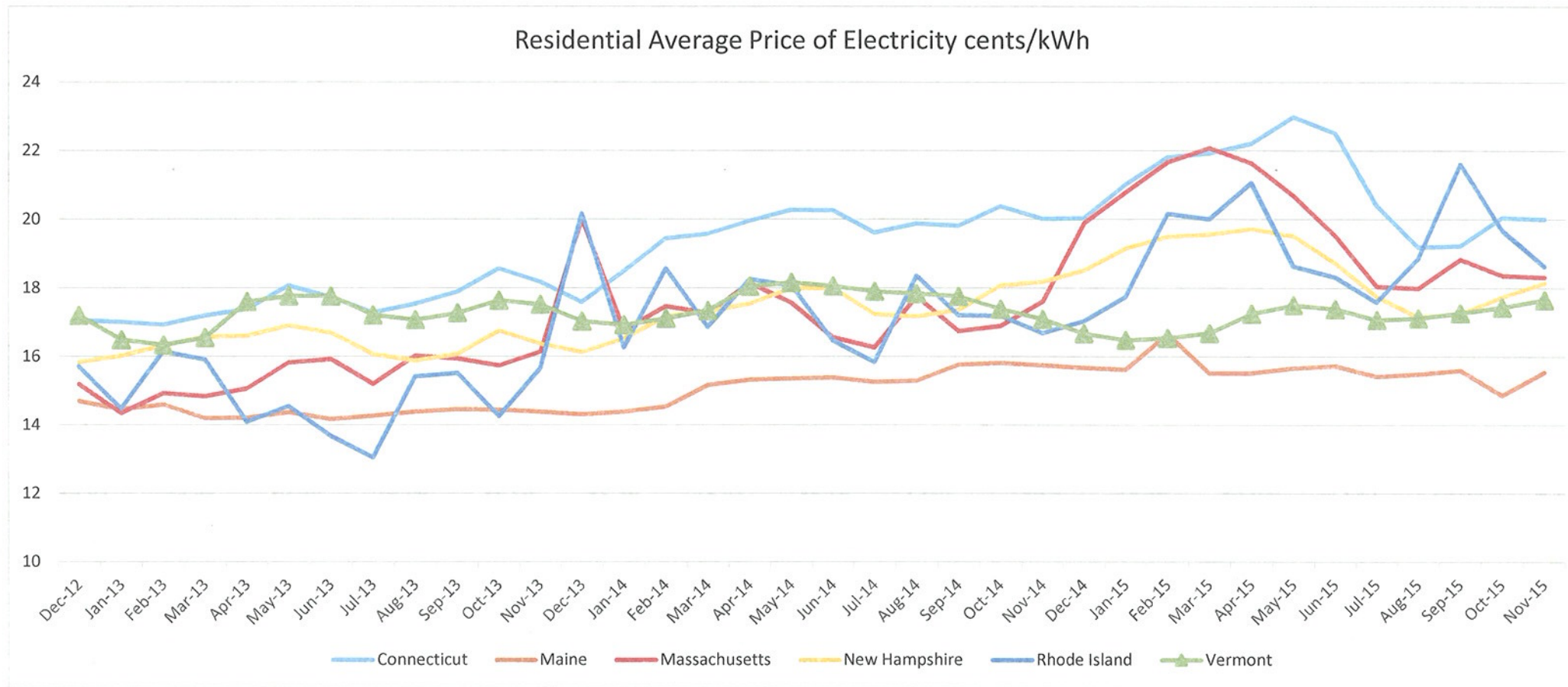
Thu Feb 18 2016 09:15:20 GMT-0500 (Eastern Standard Time)

Source: U.S. Energy Information Administration

Residential

Average retail price of electricity
cents per kilowatt-hour

	Nov-12	Dec-12	Jan-13	Feb-13	Mar-13	Apr-13	May-13	Jun-13	Jul-13	Aug-13	Sep-13	Oct-13	Nov-13	Dec-13	Jan-14	Feb-14	Mar-14	Apr-14	May-14
Connecticut	17.82	17.06	17.01	16.93	17.2	17.38	18.07	17.73	17.28	17.54	17.89	18.57	18.18	17.59	18.49	19.45	19.58	19.96	20.28
Maine	14.83	14.7	14.46	14.6	14.2	14.21	14.37	14.17	14.27	14.39	14.46	14.45	14.39	14.31	14.39	14.54	15.17	15.33	15.36
Massachusetts	13.77	15.19	14.35	14.93	14.84	15.06	15.82	15.92	15.2	16.03	15.94	15.74	16.14	20	16.77	17.47	17.27	18.15	17.57
New Hampshire	15.9	15.83	16.02	16.32	16.58	16.6	16.9	16.68	16.06	15.88	16.08	16.75	16.38	16.13	16.52	17.17	17.32	17.54	17.99
Rhode Island	13.07	15.71	14.48	16.15	15.91	14.09	14.55	13.68	13.05	15.42	15.52	14.26	15.65	20.17	16.26	18.57	16.86	18.26	18.07
Vermont	19.26	17.2	16.49	16.34	16.55	17.6	17.76	17.76	17.21	17.07	17.27	17.64	17.52	17.03	16.92	17.11	17.34	18.05	18.16



chart=ELEC.PRICE.CT-RES.M&map=ELEC.PRICE.CT-RES.M&freq=M&start=200101&end=201511&ctype=linechart<ype=pin&rtype=s&maptype=0&rse=0&pin=

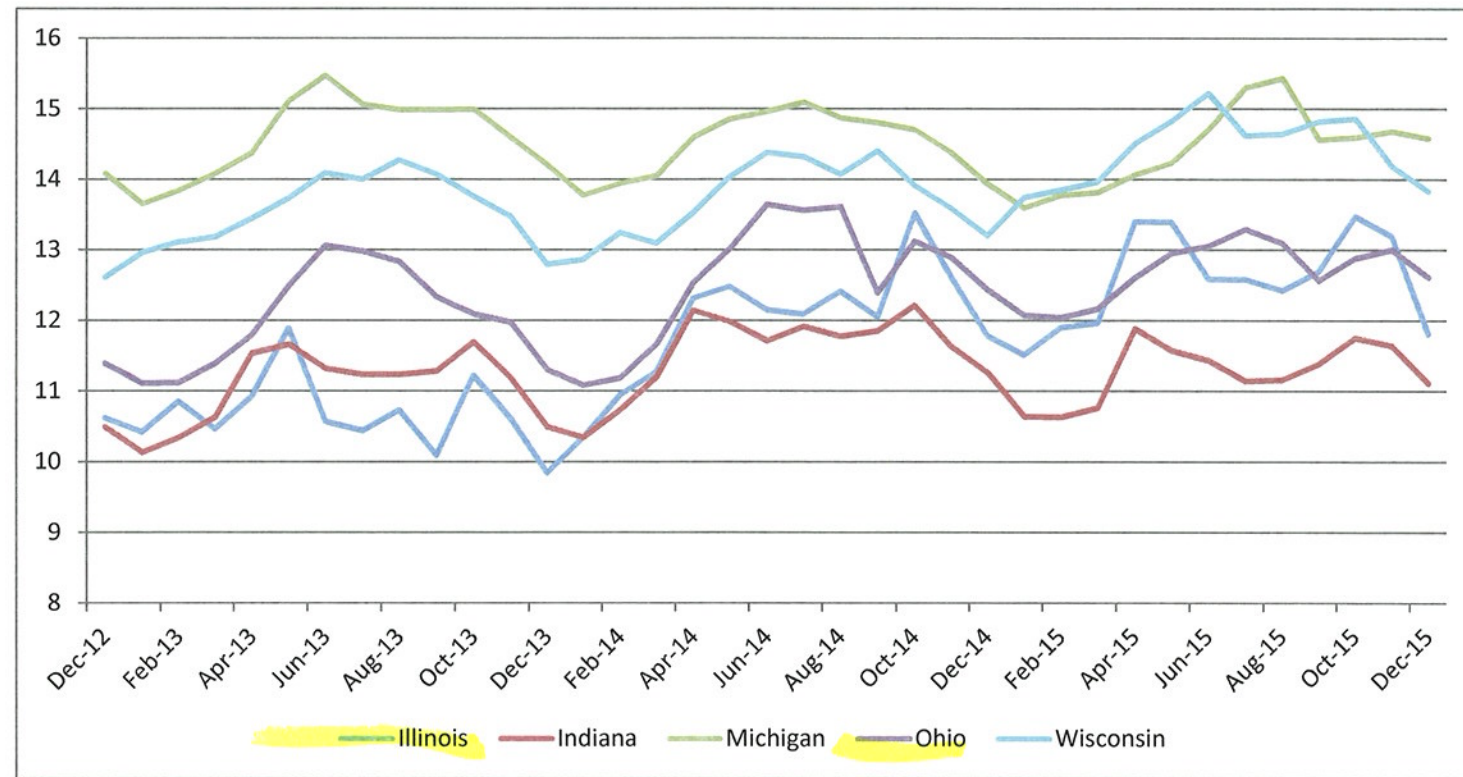
Jun-14	Jul-14	Aug-14	Sep-14	Oct-14	Nov-14	Dec-14	Jan-15	Feb-15	Mar-15	Apr-15	May-15	Jun-15	Jul-15	Aug-15	Sep-15	Oct-15	Nov-15
20.27	19.62	19.88	19.82	20.38	20.02	20.04	21.02	21.82	21.93	22.22	22.99	22.52	20.4	19.2	19.23	20.05	20.01
15.39	15.26	15.3	15.77	15.82	15.75	15.68	15.62	16.66	15.51	15.52	15.66	15.73	15.42	15.49	15.6	14.87	15.55
16.56	16.27	17.75	16.75	16.9	17.61	19.89	20.79	21.67	22.08	21.64	20.69	19.52	18.05	17.99	18.83	18.37	18.32
18	17.23	17.17	17.36	18.07	18.18	18.51	19.15	19.49	19.56	19.72	19.51	18.72	17.75	17.15	17.25	17.73	18.15
16.47	15.84	18.36	17.21	17.19	16.68	17.03	17.74	20.17	20.01	21.07	18.64	18.32	17.59	18.86	21.61	19.68	18.63
18.06	17.9	17.84	17.76	17.39	17.09	16.67	16.48	16.54	16.68	17.25	17.5	17.39	17.07	17.12	17.27	17.44	17.66

Average retail price of electricity *RESIDENTIAL*

<https://www.eia.gov/electricity/data/browser/#/topic/7?agg=1,0&geo=0000v&endsec=8&linechart=ELEC.PRICE.IL-RES.M&columnchart=ELEC.PRICE.IL-RES.M&map=ELEC.PRICE.IL-RES.M&freq=M&start=201212&end=201512&ctype=linechart>
 Fri Mar 04 2016 15:20:44 GMT-0500 (Eastern Standard Time)

Source: U.S. Energy Information Administration

	Dec-12	Jan-13	Feb-13	Mar-13	Apr-13	May-13	Jun-13	Jul-13	Aug-13	Sep-13	Oct-13	Nov-13	Dec-13	Jan-14	Feb-14	Mar-14	Apr-14	May-14	Jun-14	Jul-14
Illinois	10.62	10.42	10.85	10.46	10.92	11.89	10.57	10.44	10.73	10.09	11.22	10.61	9.84	10.34	10.94	11.27	12.31	12.48	12.15	12.09
Indiana	10.49	10.13	10.34	10.63	11.53	11.66	11.32	11.23	11.23	11.28	11.69	11.18	10.49	10.34	10.73	11.19	12.14	11.98	11.71	11.91
Michigan	14.08	13.65	13.84	14.08	14.37	15.11	15.47	15.06	14.98	14.98	14.99	14.59	14.2	13.77	13.94	14.05	14.59	14.85	14.96	15.09
Ohio	11.39	11.11	11.12	11.39	11.79	12.49	13.06	12.98	12.83	12.33	12.09	11.97	11.3	11.08	11.18	11.66	12.53	13.01	13.64	13.56
Wisconsin	12.61	12.96	13.11	13.18	13.44	13.73	14.09	14	14.27	14.07	13.76	13.47	12.79	12.86	13.24	13.09	13.52	14.03	14.38	14.32



t<ype=pin&rtype=s&mctype=0&rse=0&pin=

Aug-14	Sep-14	Oct-14	Nov-14	Dec-14	Jan-15	Feb-15	Mar-15	Apr-15	May-15	Jun-15	Jul-15	Aug-15	Sep-15	Oct-15	Nov-15	Dec-15
12.41	12.05	13.52	12.62	11.78	11.51	11.9	11.96	13.4	13.39	12.59	12.58	12.42	12.69	13.47	13.19	11.81
11.77	11.85	12.21	11.63	11.26	10.64	10.63	10.76	11.88	11.57	11.43	11.14	11.16	11.38	11.75	11.64	11.11
14.87	14.8	14.7	14.38	13.93	13.59	13.77	13.81	14.06	14.23	14.7	15.3	15.43	14.56	14.59	14.68	14.58
13.61	12.39	13.12	12.89	12.43	12.07	12.04	12.16	12.6	12.95	13.05	13.29	13.09	12.56	12.88	13	12.61
14.07	14.4	13.91	13.59	13.2	13.74	13.85	13.96	14.5	14.82	15.22	14.62	14.64	14.82	14.86	14.19	13.83

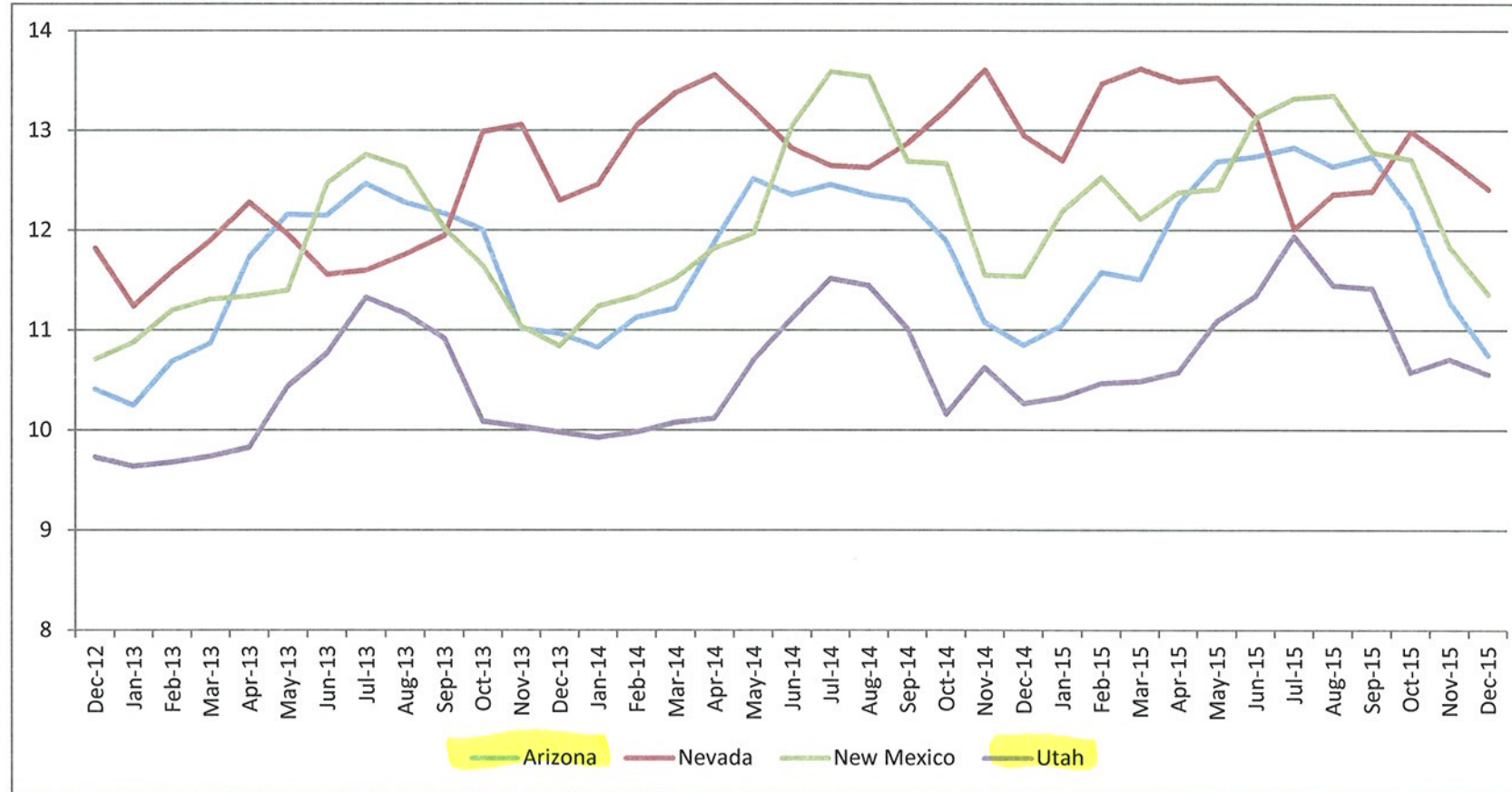
Average retail price of electricity *RESIDENTIAL*

<https://www.eia.gov/electricity/data/browser/#/topic/7?agg=1,0&geo=00000000013g&endsec=8&freq=M&start=201212&end=201512&ctype=linechart<ype=pin&rtype=s&pin=&rse=0&maptype=0>

Fri Mar 04 2016 15:32:02 GMT-0500 (Eastern Standard Time)

Source: U.S. Energy Information Administration

	Dec-12	Jan-13	Feb-13	Mar-13	Apr-13	May-13	Jun-13	Jul-13	Aug-13	Sep-13	Oct-13	Nov-13	Dec-13	Jan-14	Feb-14	Mar-14	Apr-14	May-14	Jun-14	Jul-14
Arizona	10.41	10.25	10.69	10.87	11.73	12.16	12.15	12.47	12.28	12.17	12.01	11.02	10.97	10.83	11.13	11.22	11.88	12.52	12.36	12.46
Nevada	11.82	11.24	11.59	11.9	12.28	11.96	11.56	11.6	11.76	11.95	12.99	13.06	12.3	12.46	13.05	13.38	13.56	13.2	12.82	12.65
New Mexic	10.71	10.88	11.2	11.31	11.34	11.4	12.47	12.76	12.63	12.02	11.65	11.04	10.84	11.24	11.34	11.52	11.82	11.97	13.05	13.59
Utah	9.73	9.64	9.68	9.74	9.83	10.44	10.77	11.33	11.17	10.92	10.09	10.04	9.98	9.93	9.98	10.08	10.12	10.7	11.12	11.52



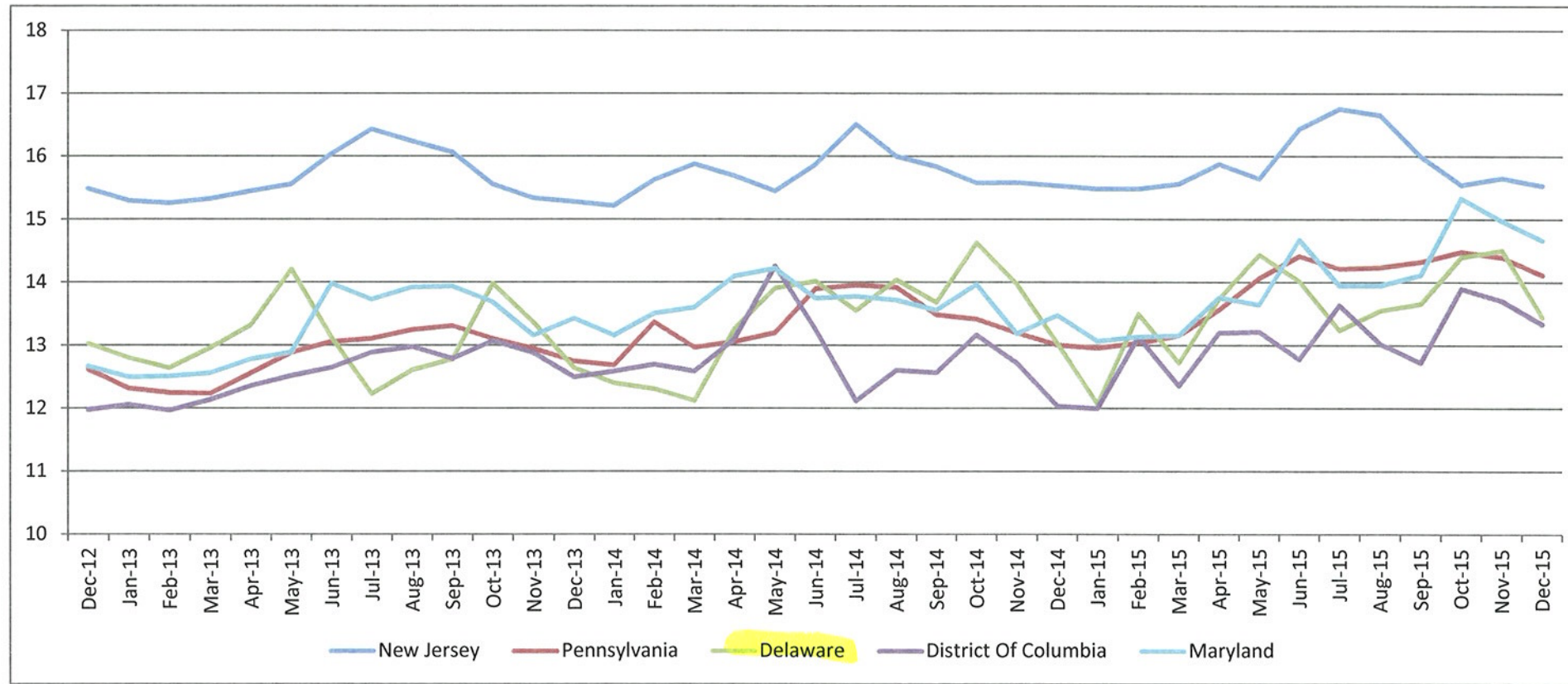
Aug-14	Sep-14	Oct-14	Nov-14	Dec-14	Jan-15	Feb-15	Mar-15	Apr-15	May-15	Jun-15	Jul-15	Aug-15	Sep-15	Oct-15	Nov-15	Dec-15
12.36	12.3	11.9	11.08	10.85	11.05	11.58	11.51	12.26	12.69	12.74	12.83	12.64	12.74	12.22	11.29	10.75
12.63	12.87	13.21	13.61	12.95	12.7	13.47	13.62	13.49	13.53	13.13	12.01	12.36	12.39	12.99	12.71	12.41
13.54	12.69	12.67	11.55	11.54	12.19	12.53	12.11	12.38	12.41	13.13	13.32	13.35	12.78	12.71	11.83	11.36
11.45	11.02	10.16	10.63	10.27	10.33	10.47	10.49	10.58	11.09	11.34	11.94	11.45	11.42	10.58	10.71	10.56

Average retail price of electricity *RESIDENTIAL*

<https://www.eia.gov/electricity/data/browser/#/topic/7?agg=1,0&geo=00050068&endsec=8&freq=M&start=201212&end=201512&ctype=linechart<ype=pin&rtype=s&maptype=0&rse=0&pin=>
 Fri Mar 04 2016 15:28:37 GMT-0500 (Eastern Standard Time)

Source: U.S. Energy Information Administration

	Dec-12	Jan-13	Feb-13	Mar-13	Apr-13	May-13	Jun-13	Jul-13	Aug-13	Sep-13	Oct-13	Nov-13	Dec-13	Jan-14	Feb-14	Mar-14	Apr-14	May-14	Jun-14	Jul-14
New Jersey	15.49	15.3	15.26	15.33	15.45	15.56	16.04	16.43	16.24	16.07	15.56	15.34	15.28	15.22	15.63	15.88	15.69	15.45	15.87	16.51
Pennsylvan	12.62	12.32	12.25	12.24	12.56	12.89	13.06	13.11	13.25	13.31	13.11	12.95	12.75	12.69	13.37	12.97	13.06	13.2	13.9	13.96
Delaware	13.03	12.8	12.64	12.96	13.32	14.21	13.12	12.23	12.61	12.78	13.98	13.36	12.64	12.4	12.31	12.12	13.26	13.91	14.02	13.55
District Of	11.98	12.06	11.97	12.14	12.36	12.52	12.65	12.89	12.98	12.79	13.07	12.88	12.5	12.59	12.7	12.59	13.1	14.26	13.25	12.12
Maryland	12.67	12.5	12.51	12.56	12.78	12.89	13.98	13.73	13.92	13.94	13.69	13.16	13.43	13.16	13.51	13.6	14.1	14.22	13.75	13.78



Aug-14	Sep-14	Oct-14	Nov-14	Dec-14	Jan-15	Feb-15	Mar-15	Apr-15	May-15	Jun-15	Jul-15	Aug-15	Sep-15	Oct-15	Nov-15	Dec-15
16	15.84	15.58	15.59	15.54	15.49	15.49	15.57	15.88	15.65	16.44	16.76	16.66	16	15.55	15.66	15.54
13.92	13.49	13.42	13.2	13.01	12.96	13.04	13.16	13.57	14.07	14.42	14.22	14.24	14.33	14.49	14.4	14.12
14.04	13.68	14.63	13.97	13.03	12.07	13.5	12.72	13.74	14.44	14.02	13.24	13.55	13.66	14.4	14.51	13.45
12.61	12.57	13.17	12.72	12.04	12	13.14	12.36	13.2	13.22	12.78	13.64	13.03	12.73	13.9	13.71	13.34
13.72	13.56	13.97	13.19	13.48	13.07	13.14	13.16	13.76	13.65	14.68	13.95	13.95	14.12	15.34	14.98	14.67

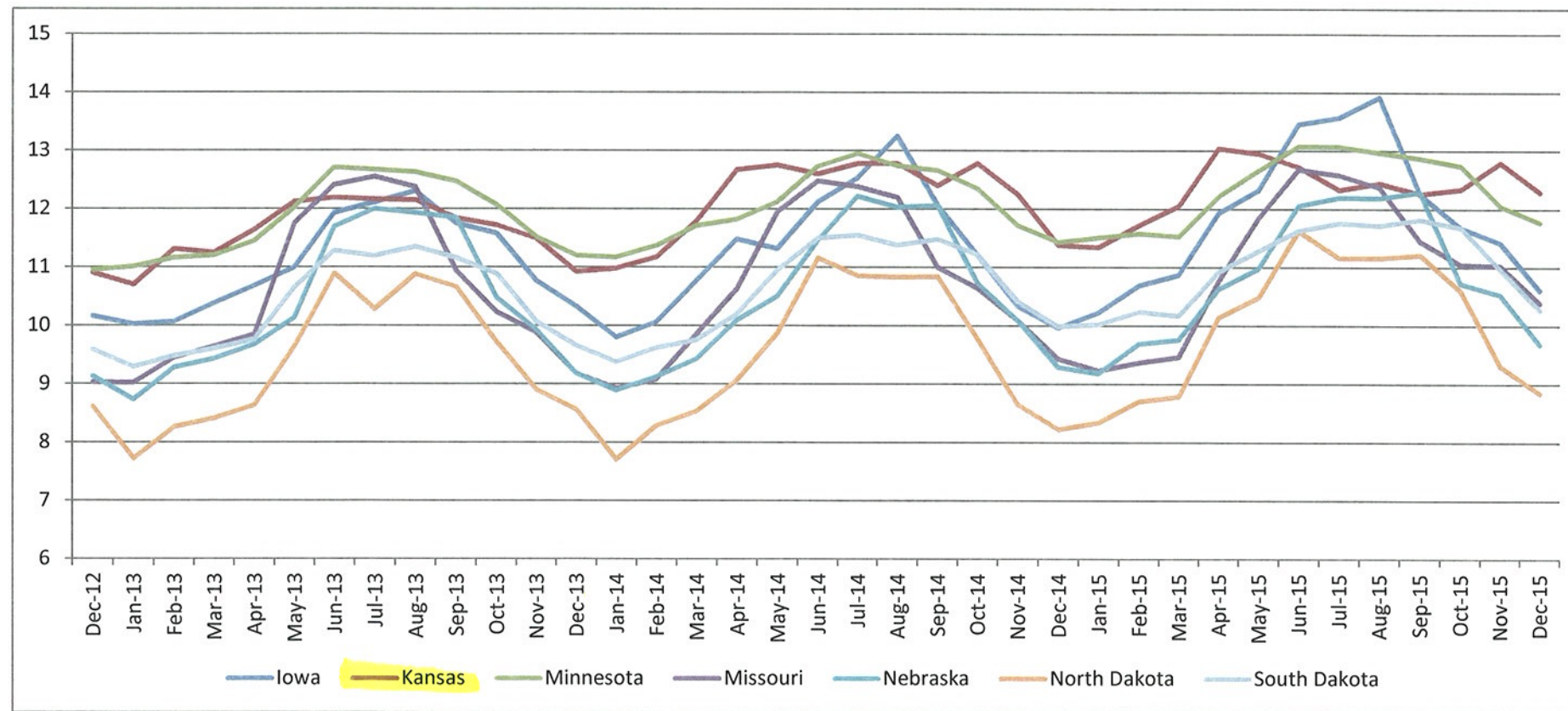
Average retail price of electricity *RESIDENTIAL*

<https://www.eia.gov/electricity/data/browser/#/topic/7?agg=1,0&geo=00000vo&endsec=8&freq=M&start=201212&end=201512&ctype=linechart<ype=pin&rtype=s&pin=&rse=0&maptype=0>

Fri Mar 04 2016 15:24:19 GMT-0500 (Eastern Standard Time)

Source: U.S. Energy Information Administration

	Dec-12	Jan-13	Feb-13	Mar-13	Apr-13	May-13	Jun-13	Jul-13	Aug-13	Sep-13	Oct-13	Nov-13	Dec-13	Jan-14	Feb-14	Mar-14	Apr-14	May-14	Jun-14	Jul-14
Iowa	10.16	10.02	10.07	10.38	10.68	10.99	11.93	12.11	12.3	11.75	11.58	10.77	10.33	9.8	10.06	10.77	11.48	11.32	12.12	12.53
Kansas	10.9	10.7	11.31	11.25	11.64	12.12	12.19	12.16	12.15	11.84	11.72	11.49	10.92	10.98	11.17	11.79	12.67	12.75	12.6	12.78
Minnesota	10.95	11.01	11.16	11.2	11.45	12.02	12.71	12.67	12.63	12.47	12.07	11.52	11.2	11.17	11.37	11.71	11.82	12.12	12.73	12.95
Missouri	9.03	9.02	9.45	9.64	9.85	11.75	12.41	12.55	12.37	10.94	10.23	9.88	9.18	8.92	9.08	9.85	10.63	11.95	12.48	12.38
Nebraska	9.13	8.73	9.28	9.43	9.67	10.13	11.69	12	11.93	11.85	10.48	9.93	9.18	8.89	9.12	9.43	10.09	10.5	11.46	12.22
North Dakc	8.61	7.72	8.26	8.41	8.63	9.64	10.89	10.28	10.88	10.66	9.72	8.9	8.56	7.7	8.28	8.53	9.06	9.87	11.16	10.85
South Dakc	9.59	9.29	9.48	9.6	9.76	10.65	11.28	11.19	11.35	11.16	10.89	10.07	9.66	9.38	9.62	9.75	10.2	10.95	11.5	11.55



Aug-14	Sep-14	Oct-14	Nov-14	Dec-14	Jan-15	Feb-15	Mar-15	Apr-15	May-15	Jun-15	Jul-15	Aug-15	Sep-15	Oct-15	Nov-15	Dec-15
13.25	12.07	11.21	10.34	9.96	10.22	10.69	10.87	11.93	12.32	13.46	13.57	13.92	12.26	11.68	11.42	10.61
12.78	12.4	12.78	12.25	11.38	11.34	11.72	12.05	13.04	12.95	12.72	12.33	12.44	12.26	12.34	12.79	12.29
12.74	12.66	12.35	11.72	11.43	11.51	11.58	11.53	12.22	12.66	13.08	13.07	12.97	12.87	12.74	12.05	11.77
12.2	11	10.64	10.09	9.43	9.23	9.37	9.46	10.76	11.84	12.68	12.58	12.37	11.45	11.05	11.03	10.39
12.03	12.06	10.73	10.09	9.29	9.18	9.69	9.76	10.63	10.98	12.06	12.2	12.19	12.29	10.72	10.53	9.68
10.83	10.84	9.77	8.65	8.22	8.34	8.7	8.78	10.14	10.48	11.62	11.16	11.16	11.21	10.59	9.31	8.84
11.38	11.48	11.22	10.42	9.99	10.02	10.24	10.17	10.92	11.28	11.63	11.76	11.72	11.82	11.68	10.97	10.27